

Activity Report 2026

Australian
Dental
Foundation





ADFi oral health therapist Han Nguyen at Lameroo and District Kindergarten.

Contents

2	About Us
3	Our Impact
4	A message from our Chairperson
5	A message from our Patron
6	Our Programs
6	My School Dentist Program
7	Aged Care Program
8	Smile Friendly Partnership Program
9	Events
10	Our Outreach
11	Our Products
12	Our Feedback
14	Our Fleet
16	Our Partners
17	Our Sponsors
18	Our Programs
18	Triage, Teledentistry
19	Department for Child Protection
20	Our Community
21	100,000 Smiles
22	Where we Work
22	Schools
23	Aged Care
24	West Care, St Mary's House of Welcome, River Nile School, Novita
25	Our People
26	Awards and Accreditation
27	Advocacy
28	A Message from our Treasurer
29	Decay-Free Future
29	Thank You

Acknowledgement of Country

We acknowledge the traditional custodians of the lands and waters of Australia and pay respect to Elders past, present and emerging.

About Us

Australian Dental Foundation (ADFi) is a national award-winning health promotion charity, passionately committed to improving Australia's oral health outcomes and wellbeing.

Our programs help to address inequalities in oral health through expanding access to compassionate, quality and professional oral health care for those who suffer the greatest burden of oral disease in Australia.

Our programs target support for at-risk cohorts including children, adolescents, seniors, and people with specialised health care needs.

We envision a decay-free future, one tooth at a time.

Every day we are improving outcomes for the most vulnerable by delivering programs and support to optimise early detection and correction of oral health diseases.

Our team is proud to empower patients with the knowledge, tools and confidence to attain good oral health.

We know that many aspects of oral disease can be prevented by optimising early detection and correction, so we are out onsite at kindergartens, schools, aged care facilities and disability service providers.

Every day we proactively work toward realising our vision for a decay-free future, one tooth at a time by:

Facilitating and expanding access to timely and adequate dental care for at-risk Australians.

Promoting good oral hygiene and nutrition through educational programs.

Advocating for improved oral health services and outcomes for Australians.

Our Impact

More than
128,025
Patients supported

More than
\$28.9 million
Value of oral health care services provided

More than
7,220
Tele-Dental consults provided to Australians living within regional/remote communities

3,636
Sites visited

More than
1,623
Oral health education sessions delivered



More than
46,979
Hours of work conducted

Since inception in 2015



Members of our ADFi team at our annual conference dinner.

A Message From Our Chairperson

As the Australian Dental Foundation (ADFi) celebrates its 10th anniversary, it is experiencing extraordinary growth, with the demand for our dental and oral health education services increasing substantially over recent years.

In mid 2024 we passed the milestone of 100,000 patients and by mid-2025 we were already at 128,000!

These people who receive our dental services and oral health education are across a broad spectrum of society – pre-schoolers and students, refugees and migrants, aged care residents, remandees, children with disability or under State care, and those living with homelessness.

Tooth decay is Australia's most prevalent health problem, with loss of all natural teeth (edentulism) Australia's third-most prevalent health problem, and gum disease (periodontal disease) rounding off the top five.

Dental problems wreak havoc within the body, causing infection, malignancy, and other serious health conditions. Dental disease has profound implications for cardiovascular diseases, pre-term and low birth-weight babies, diabetes, respiratory diseases, osteoporosis, immunosuppressive diseases, and arthritis.

Our successful delivery of oral health literacy and education programs has seen the reduction of incidence of decay, periodontal disease and in the elderly, aspiration pneumonia. Patients, carers, health care and residential care workers have gained an increased understanding of the causes and solutions of dental disease.

Thousands of Australians can now eat with confidence, smile without embarrassment and have access to dental support to eliminate the pain and health consequences of dental infection.

Our Foundation works tirelessly, efficiently and cost-effectively. Money is raised and reinvested ethically and transparently. We are proud to have accessed funding in support of our programs through organisations including BankSA Foundation, Coopers Foundation, Honda Foundation, the Flora and Frank Leith Foundation, the Foundation for Rural and Regional Renewal, Calvary Communities, Greater Western Water, Australian Churches Refugee Taskforce, DJPR and CSAPHN, among others.

On behalf of our Board and our patients, I want to personally thank all of our sponsors, partners and volunteers, together with the ADFi's extensive team of dental clinicians and support staff for their efforts to date. I look forward to continuing, and expanding, our support to improve oral health in our community.

Yours sincerely,



Dr Greg Miller
Chairperson and Clinical Ambassador

BDS. (Adel), Grad. Dip. Clin. Dent. (Oral Implants) (Syd), GDDSM (Adel), Dip. Imp. Dent. RCSEd, FRACDS, GAICD, FICD, FPFA



A Message From Our Patron

I've always believed everyone should have access to quality dental care and the tools to maintain good oral hygiene.

That's why, in January, I proudly became Patron of the Australian Dental Foundation – to help spread the word about why teeth matter.

Poor dental health isn't just about cavities – it's linked to serious issues like heart disease, strokes, and even a shorter lifespan.

Yet only around half of Australians see a dentist each year, with one in three citing financial stress as the main reason they don't.

So far, the Foundation has helped over 128,000 Australians across 3,636 sites – from rural towns to big cities – get the care they need. They also champion the push for affordable dentistry, and I'm proud to stand behind this important cause.

I'm honoured to support the Foundation and shine a light on the life-changing work they do every day.

Dr Jane Lomax-Smith OAM

Lord Mayor of Adelaide



From our home base in North Adelaide, SA, we have established a flourishing office in Port Melbourne, Victoria, which is now extending our reach on the Eastern Seaboard. A strong and growing base has been established in NSW, and our Victorian staff and clinicians are making regular trips to visit aged care facilities and schools in Tasmania.

ADFi has signed service agreements with several large aged care providers and this is facilitating our expansion to WA, NT and ACT to give us a truly national footprint.

While our Foundation has had a significant impact so far, our work isn't done yet. There is still a considerable need to address inequalities in access to oral health care across Australia and we won't stop until oral disease harm is dramatically minimised.

Access to healthcare is a basic and valuable human right – not just for treating disease, but in helping to prevent it. Despite this, many in our community still do not have access to basic local dental services, fluoridated water, or even toothbrush and toothpaste.

Nearly one in two Australian school children experiences tooth decay, with two in three adults aged 65+ experiencing gum disease. Our research also indicates two in five school children from low-income families fail to brush twice a day.

Most dental disease is entirely preventable, yet the task at hand should not be underestimated.



Our Programs

My School Dentist Program

Oral health is fundamental to a child's general health and well-being.

Two in five Australian children experience tooth decay in their baby teeth, with one in four experiencing decay in their permanent teeth. Decay is often responsible for causing significant pain, discomfort and embarrassment. Yet, many aspects of oral disease – including dental caries which lead to decay – are preventable and can be treated in their early stages via routine dental examinations, treatment and oral health education.

Our My School Dentist Program is one of Australia's largest mobile dental programs which supports convenient access to no-out-of-pocket expense oral health care and education for students onsite at kindergartens, primary and secondary schools.

The My School Dentist Program sets out to improve oral health outcomes and reduce the burden of poor oral health for children and adolescents, with a particular focus on lower socio-economic, regional and remote communities.



Aged Care Program

As people get older, their need for oral health care increases. Older people more commonly experience certain oral health diseases and related problems as they become less able to self-manage and self-report. In the latter part of life, the elderly face issues of cognitive impairment, physical frailty, functional dependence, and comorbidities.

Regular oral hygiene, early treatment and maintenance is integral in maintaining functional teeth, healthy gums and mouths. Importantly, it also addresses risk factors and helps reduce the likelihood of experiencing physical pain or discomfort from active oral disease (or ill-fitting dentures).

ADFI's Aged Care Program supports the management and prevention of oral health conditions for seniors in aged care facilities and residential living complexes – where oral disease is often prevalent from limited access to a traditional dentist. We are proud to provide a comprehensive suite of dental solutions for residents, including onsite support services delivered by our fully functional mobile dental teams. This program is the largest onsite mobile dental service for aged care in Australia and provides support to many of Australia's largest aged care providers.

We are proud to have received national awards recognising our efforts in this space, including the 'Wrigley Jr Company Foundation ADAF Principles in Action Award' and are one of only a few service providers tackling this complex problem.



Oral health is an important part of living well.

Children's Oral Health Situation in Australia

In South Australia alone, an estimated 14,500 school days are lost per year due to dental problems.

Children with poor oral health are 3x more likely to miss school.

Children living in remote areas are 6x more likely to experience dental disease.

95% of remote preschool Aboriginal and Torres Strait Islander children do not brush their teeth regularly.



1 in 10

children aged between 5–14 years have never visited a dentist.

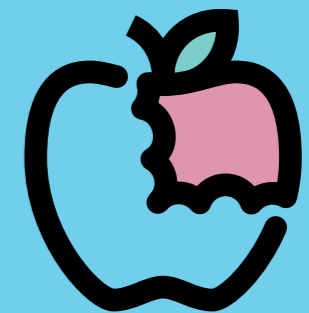
Seniors' Oral Health Situation in Australia

2 in 3 adults aged 65+ years have gum disease.

Tooth loss is 2x more prevalent among adults aged 75+ years (26%), compared with adults aged 65–74 years (13%).

Seniors living in remote areas had 30% higher average number of missing teeth than those in major cities.

53.4% of people aged 65+ experienced periodontal disease, compared with 2.7% of people aged 15–24 years.



1 in 4

Australians aged 65+ years avoid eating certain foods due to issues with their teeth.



Smile Friendly Partnership

Our new program recognises the commitment of aged care facilities, schools and early learning centres to improving oral health in our community. It encourages us all to do more by spreading the word and expanding services to reach those who need it most.

Together we want to educate and inform Australians about the importance of oral health and regular dental care. We can do this by educating students, staff and residents.

Our Smile Friendly Partners display their commitment to better oral health by giving their residents, staff and students access to information about dental services available at their site through Australian Dental Foundation.

Our Partners have access to extra support and resources from Australian Dental Foundation.

These include age-appropriate online and in-person learning modules and staff presentations, developed with our own expert clinicians.

Smile Friendly aims to help us reach even more people with our decay-free future message and to address the inequalities in access to oral health care which are still present in our communities.



By becoming a Smile Friendly site, our Partners have access to extra support and resources.

Spreading the word about oral health...

ADFi has added a couple of important events to its calendar in recent years... all in the name of spreading the word about better oral care, and healthier teeth.

Royal Adelaide Show

We've been part of the popular Yellow Brick Road for the past three shows, handing out our own brand of toothbrushes or toothpastes to 20,000 participants each year. It's been a lot of fun and we've had a wonderful group of volunteers to help us.



Brush for Good Day

We have taken over Rundle Mall for a day during Dental Health Week, handing out about 3000 toothbrushes and toothpaste to raise awareness of dental health and our charity. It's a lovely surprise for shoppers and workers in the city.



Human Services Minister Nat Cook, right, and Health Minister Chris Picton, have been among the VIPs who have helped us out at Brush for Good Day.

Our Outreach



Children we saw in Vietnam



Molly with Children

Overseas

The Australian Dental Foundation has been pleased to support a number of overseas programs by sending supplies and supporting our clinicians to do good work.

Our lovely dentist in the South-East of SA – Dr Saanchi Ramprakash – travelled to Ladakh in north-east India to provide dental check-ups and treatment to monks and nuns - aged 5 to 80 – at the Karma Dupyud Choeling Monastery. Many of us in ADFI provided financial support through her GoFundMe page and we also sent some supplies with her.

We worked with Armadillo & Co Foundation, which works specifically in disadvantaged communities in India, and put together 250 oral health packs for children.

We also partnered with the Children's Health Aid team which visited Vietnam to provide materials for them to provide dentistry to children.

Adelaide University Dental School student Molly took 150 toothbrushes as well as toothpaste samples to Papua New Guinea recently, to hand out to young people and children at a creative arts camp and a literacy clinic.

There are just a few examples.

Regional Australia

In recent years, ADFI has made an effort to reach into the regions where there is a great need for dental services. Successful grant applications have helped us to visit Port Pirie, Kadina, Lameroo/Pinnaroo, Berri and other places in SA to visit schools, childcare and aged care facilities. In WA, Victoria, Tasmania and NSW we are visiting aged care facilities under service agreements we have signed with large aged care providers.



Kadina Memorial School student Ryker with our Oral Health Therapist Han and Dental Assistant Arman



Our dental trailer Clarrie at Lameroo Regional Community School

Our New Toothbrushes and Toothpastes

Australian Dental Foundation is proud of its first retail venture. We have produced our own toothbrushes and toothpaste – clinically approved by dental professionals.

The new range includes toothbrushes for children aged 2-6, children 6+ and adult. The toothpaste also comes in a variety of flavours and concentrations for different ages.

This is a tangible and simple way for you to support the important work of Australian Dental Foundation.

The toothbrushes are stocked at a variety of supermarkets, convenience stores and dental surgeries, or you can order some online.

Next time you are shopping, look for our branded products. By buying the ADFI products you will support us to provide dental services to:

- People living with homelessness.
- Vulnerable people living in aged care.
- Children from indigenous or culturally and linguistically diverse backgrounds.
- Migrants and refugees.
- Children living with a disability.



Scan this QR code to find a stockist near you or to order online



Lacey with our new toothbrush and toothpaste.

“Some might say we are brave to go up against the big brand producers but we think Australians will enjoy supporting a locally based venture, while being reassured that the profits are going to a truly worthy cause.”

Dr Greg Miller, Chairperson and Clinical Ambassador, ADFI



Our Feedback



"It's been great having you here, it's been wonderful for our students to get the immediate care they need, as many of them will not go to the local dentist unless in pain. It is always preferable to do the dental work on site and have the quick fix option from the school's perspective.

I would especially like to commend Han and Sasha on their work, the gentle, kind nature in which they carried themselves, along with their efficiency has been amazing.

I did a comparison from last year and although the number of students your dentists saw was only slightly more than our last service, the work that was undertaken was almost tripled. I appreciate great work! The less referral we need to do the better. I know this is how our students fall through the gaps."

Nina Swinkels

Community Connections Coordinator,
Elizabeth Vale Primary School



"I write to express our sincere appreciation for the outstanding work of the Australian Dental Foundation during its visits to the towns of Lameroo and Pinnaroo in August 2024 and again in April 2025. With the support of Council funding, the Foundation was able to bring its mobile dental trailer and clinicians to both towns for a week-long visit on each occasion. During these visits, the Foundation provided services to local schools, childcare centres, and aged care facilities. In a first for the organisation, appointments were also made available to members of the general community. Across both visits, approximately 100 patients were seen in each location, a remarkable achievement that has had a tangible impact on local health outcomes.

We thank the Foundation for its continued commitment to improving dental health in the Mallee region. Their efforts have significantly enhanced access to care in our rural communities, and we deeply value the dedication and professionalism of their team."

Jason Beaton

Chief Executive Officer, Southern Mallee District Council



"I just wanted to send an email, on behalf of River Nile, to say a massive thank you to everyone from the Australian Dental Foundation who helped support the very first dental clinic at the River Nile School.

All students commented on how friendly the dentists and assistants were too. We really appreciated the kindness and trauma-informed way your team worked with our students. The team were so calm and flexible.

One of our really vulnerable students who had black stained teeth was seen by one of your beautiful dentists and the stains were removed. You couldn't wipe the smile off her face! It meant so much to her but also to us, we have linked her with community dental before who dismissed it and didn't fix it so I actually thought it couldn't be removed."

Jacinta Bongiorno

School Nurse



"Uniting AgeWell contracted all of our Victorian sites to the Australian Dental Foundation in 2020. ADF has become an essential partner in the oral and dental care of our residents and continues to positively impact upon our services through the provision of a scheduled dental program.

Our staff receive on site oral and dental training from the ADF team which has significantly strengthened Uniting AgeWell's service provision and the quality of care we are able to provide to our customers."

Ian Blair

Director of Operations - Victoria



"ADFI has been a long-time and valued sponsor of our association, which represents the principals and leaders of secondary schools in South Australia.

Representatives of ADFI spoke with many of these leaders at our annual conference in August and we applauded the ADFI's initiative to reach out to our more remote and disadvantaged schools to bring important oral health care and education.

There is a great need for dental services for these students and it is not easy for some of them to see a dentist due to financial or logistical barriers, family issues and so on."

Jayne Heath

Chief Executive Officer



"We were fortunate to have the Australian Dental Foundation come to our school. They provided a free service to our students who do not have access to Medicare and/or who cannot access a dentist due to the significant level of disability. Our students find it extremely difficult to go to a regular dentist due to sensory and regulation issues and the barriers of the cost of dental treatment. Students with a disability require specialised care and support. I cannot recommend them highly enough."

Jackie Lowther

Principal, Springvale Park Special Development School



"Massive thank you to Dr. Marwa Mostafa and her team from @australiandentalfoundation for setting up a dental clinic at SMHOW this week! The clinic was at full capacity, with 17 of our service users getting the opportunity to have dental and oral health examinations, and multiple treatments for those that needed it, including extractions, fillings, and the rebuilding of three teeth. We had a very proud and happy person who could not stop smiling after having his three teeth rebuilt, saying 'I will be able to chew again, and eat properly.'

Thank you again to Dr Mostafa for her ongoing support and commitment to provide care and a vital service to those in need. We look forward to having the Dental Foundation back for another clinic! Our students enjoyed being seen by your team in the new trailer. You offer a wonderful service.

St Mary's House of Welcome

Fitzroy, Victoria



"Autism SA has worked with the Australian Dental Foundation to develop an understanding of autism and practices that can support autistic individuals to attend dental appointments comfortably and successfully. The ADFI has a strong record in delivering oral health programs to South Australians experiencing disadvantage for whom it would be otherwise out of reach."

Niki Welz

Research, Projects and Resources Creative, Autism SA



"The Governors of the Coopers Foundation chose the Australian Dental Foundation as the inaugural recipient of our Sustainable Giving initiative. With multi-year funding from our organisation and significant pro bono support from dental professionals, they were able to go into aged care facilities and nursing homes in socially disadvantaged communities across South Australia and deliver much-needed dental care. The impact the ADFI has had on the quality of life for these residents, whose poor oral health has been linked with increased mortality and morbidity, is immeasurable. We are proud to have supported the incredible work they do for the most vulnerable in our community."

Melanie Cooper

Coopers Foundation



"The ADFI has a strong record in delivering oral health programs to South Australians experiencing disadvantages for whom it would be otherwise out of reach. The ADFI organisation is highly regarded in the community services sector for its work in this area. It can draw on a skilled dental workforce of highly motivated employees, professional experienced dentists and volunteers who contribute their time and Expertise."

Mark Kelly

General Manager, Therapy and Family Services



"Our partnership with ADFI allows residents to receive specialist services on-site.

"Access to dental services for older people can be limited by physical frailty, cognitive impairment, and co-morbidities, but ADFI's mobile dental teams helps us to overcome these obstacles by routinely visiting all of our sites to provide specialist management of oral disease and related problems," said Bernard.

"We are also excited to be a part of the ADFI's Smile Friendly Partnership, which promotes the importance of oral hygiene and regular dental check-ups for older people in residential care."

Bernard Morrison

General Manager Wellbeing & Allied Programs



"ADFI regularly visits many of our member schools, providing services at no out-of-pocket cost to students regardless of their financial, Medicare or residential status.

ADFI is a trusted service that has operated for a decade with full AIP accreditation and we have no hesitation in recommending them."

Tobias O'Connor

President



"I knew I always had a passion for community health which is what the Foundation strives for. I really enjoy working for the Foundation and being able to provide dental services across Metropolitan and Regional areas to people who don't have access to dental care."

Han Nguyen

Oral Health Therapist who works in schools, childcare and aged care. Han also volunteers with Baptist Care to provide free dental services to people living with homelessness.

Our Fleet

Expanding Our Reach

Space is at a premium for many schools and other facilities we visit, and that is why we have worked hard to build our fleet of mobile dental clinics.

While some schools have the space, or prefer us to work in a room with our portable equipment, the flexibility of our mobile fleet is allowing us to visit more sites and get out to the regions.

Thanks to the generosity of our founders and a philanthropic grant, in the past two years we have grown our fleet from a single mobile clinic to five vehicles!



Peyton and her mum Tabitha with Education Minister Blair Boyer outside "Shirley" at Keller Road Primary School.



Dr Amar and DA Olivia with our Victory trailer at Blakeview Primary School.

Once fitted out, these acquisitions will allow us to reach even more people in more remote and regional areas where dental services are hard to find or financially out-of-reach for residents.

We are still exploring the best ways to use these new facilities so stay posted on our website for updates.

Although our commercial van is too small for a treatment space, it is providing a great transport option for small freight (including our new toothbrushes and toothpaste) and is an important community engagement tool. So we've been out and about regularly in our van, spreading the word and visiting many schools and other facilities.



Halle, Jed and Olivia board Clarrie for their checkups at Lameroo Regional Community School

Clarrie (below) is our flagship dual-surgery mobile clinic - makes a big splash wherever he goes, as he is towed by a prime mover. He has worked at some of our bigger schools in SA and Victoria, and also been out to country SA, including Kangaroo Island. He is fully accessible for disability patients, including a knee-break chair and wheelchair lift.

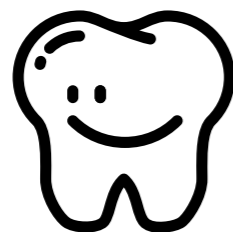
Shirley and Doreen (middle right) are twin mobile clinics that are always busy at schools.

Victory is a versatile small trailer with wheelchair access.

Addie (bottom right) is the newest clinic in our fleet. This self-drive clinic is giving us more flexibility to fit into smaller spaces at sites and also has wheelchair access.



"Addie's" first engagement was at Le Fevre Peninsula Primary School



Clarrie at Melton Christian College.

Our Partners

We are proud to partner with a growing number of associations and industry peak bodies.

to work with them to find those who need our services;

to spread the word about good oral health and its importance to wellbeing.

These include:

SA Primary Principals' Association

SA Catholic Primary Principals' Association

SA Secondary Principals' Association

University of Adelaide Dental Students Society

Australian College of Emergency Medicine

SA School Business Association

SA Cancer Council

Social Traders



Amelia, Kym, and Jayne from SASPA.



At SASPA, Shauna Black with Ian Kent and Peter Philp from KICE.



Students Julia, Jeevika, and Dhivyaa with Dr Alex, Dr Greg, Dr Marionelli, Dr Zarah, and Dr Mihika.



Abbey from ADFI with a patient and his carer at Novita St Mary's.



Sanjay, Noor, Matt from AUDSS and Tyler from ADFI, at front.



We also have important partnerships with Baptist Care, Novita, Zoos SA, Adelaide Remand Centre, Lutheran Care and hundreds of schools, early learning centres and aged care facilities.

We value all of our partnerships and you can read more about some of them in this document.

Thank you to our many partners and supporters who help us to do the important work of reaching those who have difficulty accessing dental care for whatever reason.

Our Sponsors



BankSA Foundation

The BankSA Foundation provided funding to significantly enhance our service scope and treatment footprint for underprivileged communities across metropolitan and regional South Australia and beyond



Coopers Brewery Foundation

The Coopers Brewery Foundation has graciously donated funds through the Coopers Brewery Sustainable Giving Program. Their contribution extends for three years and has enabled the purchase of additional dental outreach equipment to then deliver support for more than 1,000 additional patients in aged care facilities and nursing homes, across country South Australia.



The Honda Foundation

The Honda Foundation provided us with support to purchase a portable dental unit which enabled us to continue and indeed increase our service footprint. This will in turn facilitate improved oral healthcare for those Australians in greatest need, with a particular focus on school aged children and the elderly.



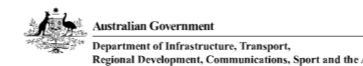
Greater Western Water

Greater Western Water in Melbourne provided us with a grant to invest in mobile dental equipment to expand our services to school and aged care facilities in the area they service – the greater western area of Melbourne. The project will equip two more dental teams for Australian Dental Foundation with new digital diagnostic equipment to better diagnose and treat oral/dental disease. The Healthy Smiles for Greater Western Melbourne project will enable our Port Melbourne-based team to expand its mobile dental operations.



Australian Churches Refugee Taskforce and Smartgroup Foundation

The Australian Churches Refugee Taskforce and Smartgroup Foundation have both provided financial support for our project to provide dental care and oral health education for refugee and migrant women aged 16 to 22 at River Nile School in Melbourne. The funding supports equipment, staff and logistics costs for this important work. Many of these young women had not had dentistry for 10 years, if at all.



Stronger Communities Program

The Stronger Communities Program is a Federal initiative that provides each Federal Member of Parliament with \$150,000 to grant to projects and organisations in their electorate. Thank you to the Member for Macnamara, Josh Burns, where our Melbourne office is based, who included us in his list of supported projects. The equipment purchased with this grant will support our mobile teams in Melbourne to reach out to more sites.



Department of Jobs, Precincts and Regions

The Victorian Government supported our Smiles for Regional Aged Care Residents project through its Social Enterprise Support Grants program so that we could buy mobile equipment to reach 1400-plus people in 68 aged care facilities in socially disadvantaged communities across Victoria.



Flora and Frank Leith Charitable Trust

The generous support of the Flora and Frank Leith Charitable Trust assisted us to buy a mobile clinic with disability and wheelchair access. The Trust has helped us in our mission to ensure that all children have access to good dental care and oral health education.



ATCO

In our quest to reach into regional Australia, ATCO provided us with funding for our "Healthy Smiles for Yorke Peninsula and Beyond", allowing us to visit Kadina, Maitland, Wallaroo and Port Pirie, to bring dental checkups and treatments to school children, children at childcare, clients of Novita and residents in aged care.



Foundation for Rural and Regional Renewal

The Foundation for Rural and Regional Renewal has provided a grant to assist us to visit Loxton in SA's Riverland. We will visit schools and residential aged care facilities over three weeks. The region has been impacted in recent years by the River Murray flood, followed by drought, all while coping with a Chinese tariff standoff on Australian wine.

Our Programs

Dental Emergency Situation in Australia

2 hours and 46 minutes was the average time spent in the emergency room for dental related problems.

56% of all dental admissions resulted in a discharge from the ED with opioid or antibiotic prescriptions, which did not eliminate the need for patients to be seen by a dentist.

11 people died in Australia in 2011 due to dental infection.



68%

of dental patients presented at the Emergency Department (ED) out of usual business hours.

Emergency Triage and Tele-Dentistry

A dental emergency can happen at any time. ADFi's Emergency Triage hotline has enabled Australians to access phone support outside of the regular hours that local dental clinics typically operate. Such support provides vital advice to patients on both short and medium term solutions to ensure patient dental concerns can be resolved.

Whether a patient is suffering from a toothache, trauma, or any other dental concern, Tele-Dentistry is a convenient, accessible, and efficient option for patients to talk to a dental clinician, where face-to-face consultations may not be possible due to various access constraints – saving travel, time, money, and worry.

Tele-Dentistry is similar to a conventional, real-time dental consultation; with the patient connecting to a dentist remotely via a secure video chat platform. Such services are not intended to replace an essential dentist visit, but rather a convenient solution when they cannot see a dentist in person.

Our Foundation's clinical team can support assessments of the oral health situation where appropriate information is provided and make recommendations for remediation or care. In a circumstance in which patients require care, our team of dentists can provide immediate and professional dental advice, sympathetic of their current condition. Next steps may include referrals to a nearest hospital, dentist, or general practitioner where appropriate.



Dr Diana at Christies Beach Primary School.

Our Programs



Increased Dental Services for Vulnerable Children

In a state-first, young South Australians who have left care are given access to increased, free dental services under a Memorandum of Understanding between ADFi and the Department for Child Protection (SA). The partnership has just been renewed for a further three years. It provides:

Access to free dental services for eligible young people who have left care up to the age of 25.

Emergency after hours dental care for children and young people in care, including in the regions through participating ADFi fixed clinics throughout metropolitan Adelaide and regional SA.

Fee-capped orthodontic treatment for eligible children and young people in care who do not meet the criteria for treatment through the SA Dental Service.

Our partnership also now incorporates school holiday dental clinics at DCP's offices around Adelaide. As part of our commitment to eliminating tooth decay, we donated a tube of toothpaste for every child living in State care, as part of our Brush for Good campaign in 2025.



Jackie, Bray, Shauna Black, and Katrine Hildyard with our retail products.

We were proud to be recognised for our commitment to the State's most vulnerable children at the 2024 SA Child Protection Awards where we were honoured with the Outstanding Service Award for Wellbeing and Development.



Australian Dental Foundation at the DCP Awards 2024.



“Oral health is integral to full body health and to a person's sense of wellbeing and confidence - and it starts from birth. Children and young people in care absolutely deserve to access the dental care and treatment they need to help ensure their teeth are strong and healthy for life.

I am so proud that the Department for Child Protection is continuing its partnership with the Australian Dental Foundation to ensure children and young people in care have access to the dental care they need to be healthy and to feel as confident as possible. Thank you very much to all involved for choosing to make a lasting difference in the lives of young people.”

Katrine Hildyard, Minister for Child Protection.

Our Community

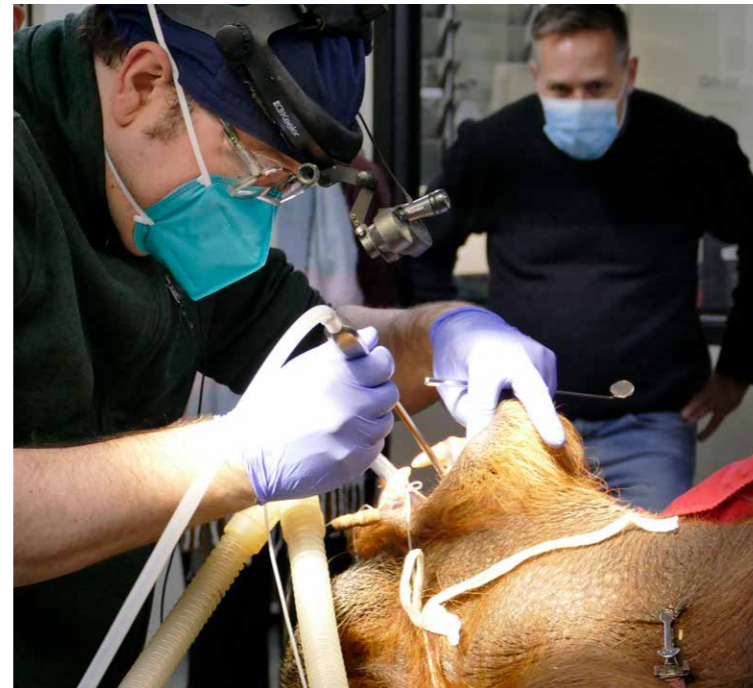


Supporting animal oral health with Zoos SA

ADFi has a long-standing partnership with ZoosSA. We provide annual funding and Dr Greg Miller provides dental services to animals there, particularly Kluet the Orangutan, who has regular checkups, cleaning and treatment for his gum disease.

We are pleased to support many worthy causes by donating toothbrushes and toothpaste. Here are just some:

- Foodbank
- Backpacks 4 Kids
- Mother's Day Classic
- Treasure Boxes



ADFi Chairperson and Clinical Ambassador, Dr Greg Miller, and the Sumatran Orangutan Kluet.



CLOCKWISE FROM TOP LEFT: Sarah and Dale, Salisbury High School; our regional team members Loola, Jorge, Rhianna, Belinda; Lorna and Sarah, Para Hills P-6 School; Ruby and Laurie, Mark Oliphant College; ADFi team members.



“Treating Kluet is no different to providing dental care to a human, he is just a whole lot hairier!”

Dr Greg Miller.



Foodbank has been a longstanding partner.



Delivering toothpaste and toothbrushes to Backpacks 4 Kids.



Providing essential support to disadvantaged children through Treasure Boxes.



At our official celebration, from left, ADFi board member Jan Miller, Catherine McAuley School principal Marc Foster, Mayor of Playford Glenn Docherty, ADFi's Director of Engagement Shauna Black, Member for Elizabeth Lee Odenwalder, Christine Isemonger of Playford Primary School, ADFi National Operations Director Brett Miller.

Celebrating 100,000 smiles!

Last year we celebrated our 100,000th patient. We had a fun activation at Playford Primary School and Catherine McAuley School to mark the occasion and many others helped us to celebrate by being photographed in our “frame”.

Of course, there is still much work to do and we look forward to celebrating our one-millionth patient!

Where we work

Schools

We've now provided dental checkups, treatment and oral health education to more than 100,000 Australian children in childcare and schools across the nation.

ADFi concentrates its work in areas where there is disadvantage and the majority of children we have seen are unlikely to have seen a dentist before our visit.

We believe it's important to go where the children are - to their school, preschool, childcare or early learning centre - bringing healthy smiles and a bright future.

We use our mobile dental clinics and also work in school rooms with portable equipment.



Aged Care

Mobile dental services for residential aged care is a core part of our Foundation's work.

ADFi is the single largest provider of dental services to aged care in Australia and there is much demand for our services.

There is recognition now of the importance of oral health to our senior residents. But of course they face significant mobility issues in accessing regular dental services. Our portable equipment and mobile dentists are meeting a growing need.

We have campaigned consistently for a Medicare benefit for aged care dental and in the meantime we are doing our best to reach as many of our nation's thousands of seniors living in aged care.

We operate in every state and have signed service agreements with some of the nation's largest aged care providers:

- Uniting AgeWell
- Calvary
- Bolton Clarke
- Eldercare
- Regis
- Lutheran Homes Group
- Mercy Place
- Arcare

We visit hundreds of other facilities, and we are on track to see 10,000 aged care patients in about 400 facilities in 2025.

Where We Work

As Australia's largest dental health charity, ADFi works with some of Australia's most vulnerable people.

We work with those living with homelessness through **Baptist Care's Westcare Centre** in Adelaide and **St Mary's House of Welcome** in Melbourne. We have had multiple visits to **River Nile School in Melbourne** - a school for young migrant and refugee women.

Through our partnership with disability group **Novita** we conduct regular clinics for disabled children and adults. ADFi is contracted to provide weekly dental services at the **Adelaide Remand Centre**.

We work with **First Nations** people at many of our sites, including at Crossways Lutheran school in Ceduna.



St Mary's House of Welcome



Abbey with Novita client and his mum.



Baptist Care's WestCare centre



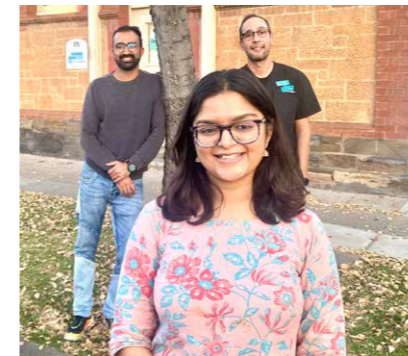
Crossways Lutheran School, Ceduna



River Nile School - lang, Genesis and Ndrah

Our People

Our staff includes some very highly qualified people who have moved to Australia and work for us as dental assistants while they seek Australian qualifications, such as Arman, Jahnavee, and Alex.



ADFi welcomes interns who gain experience with us in a variety of ways, such as Vihanigi, with our Victoria team members Sid, Jaldi and Pip.



Beth Collis and her crew at our warehouse, where we pack and distribute our toothbrushes and toothpaste.

We also rely on the assistance of many volunteers who help us, sometimes in regional and remote locations, such as Phil and Ben, who helped us to move our dental trailer around to three schools in Berri.



Our staff are always keen to get out to spread the healthy smiles message.



Sasha, Abbey and Claire at a school activation.

Awards and Accreditation



Quality Innovation Practice

ADFi is committed to the provision of quality care, patient safety and continuous improvement.

ADFi has been independently recognised for high standards with a Quality Innovation Performance (QIP) accreditation, Australia's premier healthcare organisation for dental accreditation.

Achieving QIP accreditation means ADFi consistently meets National Safety and Quality Health Service Standards that govern the dental industry, providing assurance for quality and performance for all patient care in our mobile and fixed dental clinics.



Premier's Business and Export Awards

We were thrilled to be named a finalist in the South Australian Premier's Business and Export Awards for 2025 in the Not-for-Profit category.

ADFi was in esteemed company, honored alongside some of the State's biggest and long-established charities. Awards such as these help to lift our profile in the business community and assist us to gain further support for our critical work.



Registered Charity

ADFi is a registered charity with the Australian Charities and Not-for-Profits Commission, to which it provides financial and activity reports each year.



SA Child Protection Awards

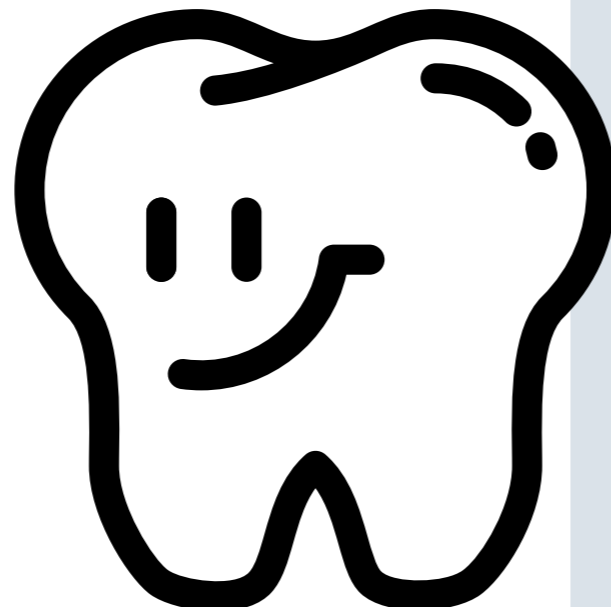
Our ongoing work to provide dental services to children living under state care was recognized in the 2024 Child Protection Awards. This honour reflects our valuable relationship with the Department for Child Protection.

Our Memorandum of Understanding with DCP was renewed in late 2024 and continues to expand and grow to provide more opportunities to reach our State's most vulnerable children with dental support.



Social Trader and Social Enterprise Certified

ADFi intentionally tackles social barriers to oral care, improving Australia's oral health outcomes and well-being as well as providing employment and training opportunities for Australians. Since 2020, ADFi has been recognised as a certified social enterprise and has participated in social enterprise workshops and training.



Advocacy

We have submitted numerous papers, submissions and policy response documents to all levels of government and have remained an influential, leading voice in championing improved oral health care outcomes across the nation. Such submissions help bring awareness and address the gaps in oral health within Australia.

Advocating for improved oral health services and outcomes for Australians.

Board Members



Dr Greg Miller
Chairperson and
Clinical Ambassador



Neil Oakes
Treasurer



Chris Henry
Secretary



Brett Miller
Director of
National Operations



Rhonda Miller
Board Member



Vince Minervini
Board Member



Belinda Gilgen
Board Member

A Message From Our Treasurer



ADFi continues to receive donations and grants to assist in funding the provision of dental services and oral health education to a wide cross section of our community. This together with funds raised via the operation of both fixed and mobile clinics has resulted in the Foundation generating more than **\$4m of income** over the 2025 financial Year.

These funds continue to be used on the funding of dental services to increase oral health, awareness, and education, particularly among the vulnerable sections of our community being children and the elderly. To this end, all of the income generated in 2025 has been expended in full.

Pleasingly the Foundation has grown and matured into a self-funding organisation with reliance on key donors reducing significantly.

From a financial perspective, the Board has also:

- Overseen the expansion of the ADFi's activities and establishment of fixed clinics in Victoria, NSW, Tasmania and Queensland.

- Continues to invest in equipment required to provide the dental services and education by our volunteers, staff and contractors. This equipment includes dental trailers, motor vehicles, and various items of plant and tools for use in delivering dental services.

- Funded the administration and governance costs of the ADFi.

- Funded the operation of fixed clinics.

- Approved funding to expand the programs undertaken by the ADFi, particularly interstate in Victoria, NSW, Tasmania and Queensland.

No salaries or wages were paid by ADFi to any Board Members.

Overall, ADFi is solvent and in a strong financial position with a net asset position as at June 30, 2025, of \$1.785 million comprising cash reserves in excess of \$450,000.

Yours sincerely,

Neil Oakes
Treasurer

It gives me great pleasure to present to you my report on the financial performance of the Australian Dental Foundation Incorporated (ADFi) for the year ended June 30, 2025.

Decay-Free Future

There is an urgent need to address the remaining inequalities in oral health care across Australia. Oral disease can lead to lasting physical and psychological disability, and we are committed to closing this service gap through specifically formulated timely intervention, primary prevention, and maintenance strategies. In support of a decay-free future, we have developed our own affordable oral health products and we are always looking for ways to fund our work in the regions.

We pledge to continue to expand our services, programs and projects to support improved oral health outcomes into the future as we look towards our decay-free future vision to further address inequalities in oral health and reduce the barriers to enable dental care for all.

Thank You

Together, we are helping improve Australia's oral health outcomes and well-being for a future without oral disease. Your support and generosity enables us to break down the ever-increasing barriers to oral health care for our target communities whom indeed suffer the greatest burden and would otherwise be forgotten, especially for regional and remote communities.

Together, we are making a lifelong impact, one tooth at a time.

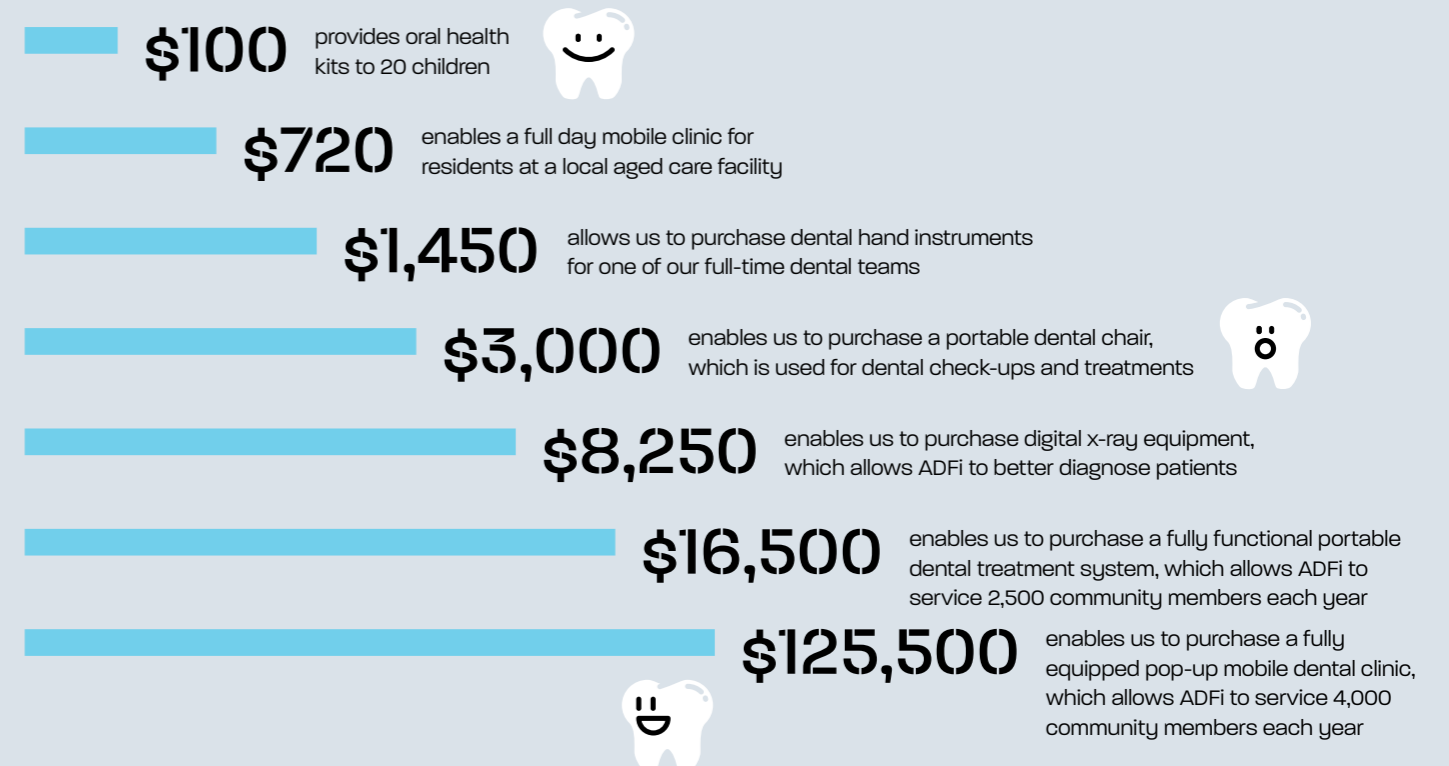


Your support will make a tangible difference.

Scan me to learn more about how you can help!

Help Make A Difference

Every dollar donated helps us treat, train, equip or educate Australians, so we can move to a decay-free future.



Australian
Dental
Foundation



Follow us:
@australiandentalfoundation

SA / WA / NT

Email: **sa@dentalfoundation.org.au**
wa@dentalfoundation.org.au
nt@dentalfoundation.org.au
Phone: 08) 7226 1709
Post: 175 Ward Street,
North Adelaide SA 5006

VIC / TAS / QLD

Email: **vic@dentalfoundation.org.au**
tas@dentalfoundation.org.au
qld@dentalfoundation.org.au
Phone: 03) 9013 6644
Post: 9/173 Salmon Street,
Port Melbourne VIC 3207

NSW

Email: **nsw@dentalfoundation.org.au**
Phone: 02) 8107 4887
Post: Medical Precinct, Suite 7D/F,
Level 1/2b Brett St,
Revesby NSW 2212